

Catalogue



Buy New Zealand Made

New Zealand Made is desirable around the world, because in addition to our 'clean and green' image, NZ boasts strict standards for production and we are known for our fair trading practices. The buy New Zealand Made campaign amplifies these values and is well recognised.

Carac Group is proud to source when possible raw materials and components from New Zealand manufacturers.

All Carac products are made in New Zealand to the highest possible standards with the well known quality evident in every product produced.

Quality

Quality is core to all products and services provided by Carac Group, it is our policy to deliver defect-free products. Our quality focused culture aims for 100% customer satisfaction.

All road couplings have the New Zealand Standard 5232, this standard is annually certified by Bureau Veritas.

This is the only New Zealand made coupling with the 'S' mark and a lifetime warranty



Couplings	1-2
Coupling Accessories	3-5
Mudguards	6
Tandem Rockers	7
Tandem Rocker Parts	8
Hangers & Slippers	8
Chassis Brackets	8
Hubs and Stubs	9
Hinge Straps & Gudgeons	10
Spring Bolts	10
Boat Trailer Componentry	11
TrackGrip	12-15
TrackBack	16-17
Pipe Blanks, Clamps & Saddles	18
Stirrers, Trough Boss & Strop Winder	19

1-7/8" Towball



WB-2000-178

Weld on
Zinc Plated
2000kg

WB-2000-178-B

Bolt on
Zinc Plated
2000kg



WBB-2000-178

Weld on
Black/Raw steel body
2000kg
Supplied unassembled



50mm Towball

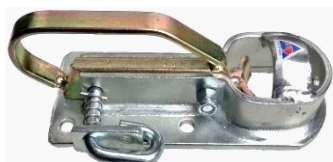


WB-2000-50

Weld on
Zinc Plated
2000kg

WB-2000-50-B

Bolt on
Zinc Plated
2000kg



WBB-2000-50

Weld on
Black/Raw steel body
2000kg
Supplied unassembled



2-in-1 (50mm & 1-7/8")



WB-2000-50-178

Weld on
Zinc Plated
2000kg

WB-2000-50-178-B

Bolt on
Zinc Plated
2000kg



WBB-2000-50-178

Weld on
Black/Raw steel body
2000kg
Supplied unassembled



1-7/8" Towball



C2000-178-B

Bolt on
Zinc Plated
2000kg

CB2000-178

Weld on
Black/Raw steel body
2000kg
Supplied unassembled



50mm Towball



C2000-50-B

Bolt on
Zinc Plated
2000kg

C3500-50-B

Bolt on
Zinc Plated
3500kg



CB-2000-50

Weld on
Black/Raw steel body
2000kg
Supplied unassembled



2-in-1 (50mm & 1-7/8")

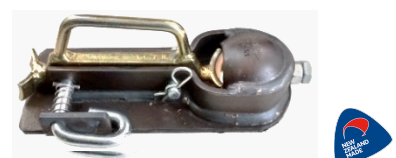


C2000-50-178-B

Bolt on
Zinc Plated
2000kg

CB-2000-50-178

Weld on
Black/Raw steel body
2000kg
Supplied unassembled



Coupling Parts & Accessories



CH-2000-178

Replacement handle for 2000kg 1-7/8" coupling



CH-3500-178

Replacement handle for 3500kg 1-7/8" coupling



CH-2000-50

Replacement handle for 2000kg 50mm coupling



CH-3500-50

Replacement handle for 3500kg 50mm coupling



CH-2000-50-178

Replacement handle for 2000kg 2-in-1 coupling



SWI-CP-AZ

Swivel & agricultural coupling assembly, zinc plated
Weld on, choice of any agricultural coupling



SWI-CP-AB

Swivel & agricultural coupling assembly, black swivel
and body, choice of any agricultural coupling



BOA2000

Brake override hydraulic breakaway system
2000kg adjustable, C2000-50-178 coupling
(if the trailer breaks away from the vehicle the
brake lock lever is actuated and the trailer
brakes are applied).

Complies to NZ Standards 'S' mark 5232



C-PK-FF

Coupling pin kit, front, fixed (bolt and nyloc nut)



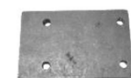
C-PK-R

Coupling pin kit, rear (rear lock pin, spring, roll pin)



C-PK-FD

Coupling pin kit, front, dual for 2-in-1 (pin & r-clip)



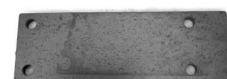
CMP

Carac Couplings mount plate for bolt on couplings
50mm x 85mm threaded hole centre, black



TC30

Trojan coupling mount plate, 11mmØ non-threaded
holes at 54mm x 182mm centres, black



BOAMP

Break override coupling mount plate, 12.5mmØ
non-threaded holes at 54mm x 182mm centres, black



SWI-AB

Coupling swivel, assembled, black



SWI-UAB

Coupling swivel, unassembled, black



BM-50-178

Bin Mate wheelie bin tow hitch, designed for
both 1-7/8" and 50mm towballs. Tow your
wheelie bin to the end of your long driveway!





TOWLOCK™

FITTING INSTRUCTIONS

TO FIT A TOWLOCK™

1. Seat wider end over towball.
2. Position the spring at rear of towball.
3. Slide up neck and rotate.
4. Attach a D clip/tow rope clip to the large end of the **TOWLOCK™**

DO NOT OVER STRETCH THE SPRING

TO REMOVE A TOWLOCK™

Push **TOWLOCK™** forward then lift the **TOWLOCK™** off the towball.



Made in New Zealand by

CARAC
GROUP

P. 06 764 8254 | E. carac@xtra.co.nz
53 Bridge Street, Eltham | www.carac.nz

Towlock™



TOWLOCK-1.5T

Lightweight versatile best solution for the quad bike

TOWLOCK-2T

Perfect for the car and all emergency situations

TOWLOCK-3.2T

Heavy duty that will cope with a larger load

TOWLOCK-4.5T

Best for the most punishing conditions



TOWKIT-1.5T

Includes

1.5T Zinc Plated Towlock™

4M Tow strap

Clip on connection



TOWKIT-2T

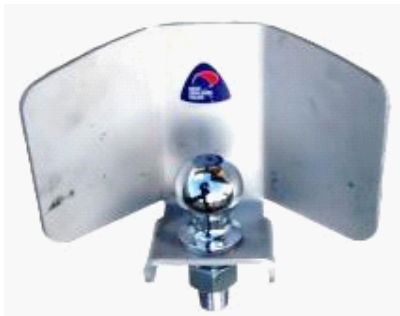
Includes

2T Zinc plated Towlock™

3.6M Heavy duty tow strap

D-shackle included

Backing Guides



BG-1P-3/4-SS

1 piece to suit 3/4"Ø towball shank Stainless Steel

BG-1P-3/4-ZP

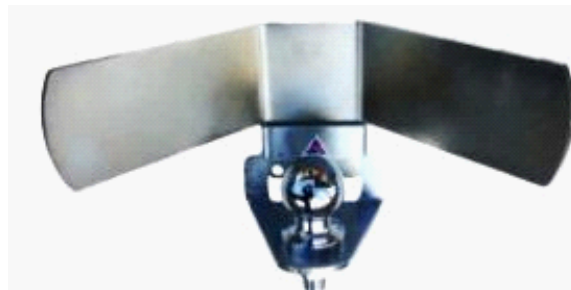
1 piece to suit 3/4"Ø towball shank Zinc Plated

BG-1P-1-SS

1 piece to suit 1"Ø towball shank Stainless Steel

BG-1P-1-ZP

1 piece to suit 1"Ø towball shank Zinc Plated



BG-2P-3/4-ZP

2 piece padlockable to suit 3/4"Ø towball shank

detachable top for opening van & hatch doors

Zinc Plated

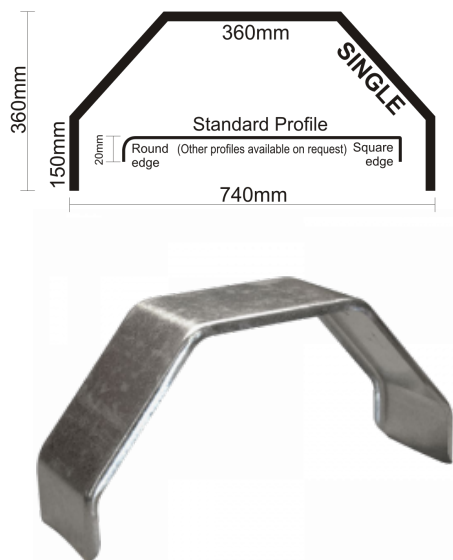
BG-2P-1-ZP

2 piece padlockable to suit 1"Ø towball shank

detachable top for opening van & hatch doors

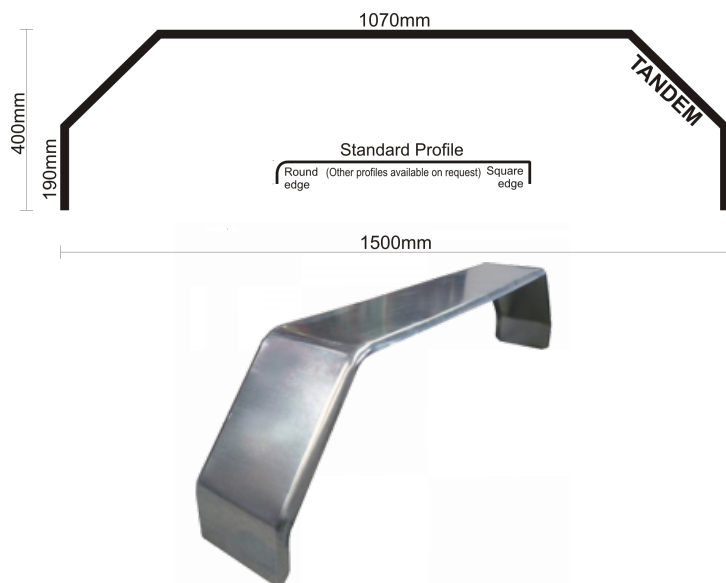
Zinc Plated

Single



Width	Thickness	Black Cold Rolled	Galvanised
200	1.6	SG-200x1.6-SR-B	SG-200x1.6-SR-G
	2	SG-200x2-SR-B	SG-200x2-SR-G
	3	SG-200x3-SR-B	SG-200x3-SR-G
216	1.6	SG-216x1.6-SR-B	SG-216x1.6-SR-G
	2	SG-216x2-SR-B	SG-216x2-SR-G
	3	SG-216x3-SR-B	SG-216x3-SR-G
230	1.6	SG-230x1.6-SR-B	SG-230x1.6-SR-G
	2	SG-230x2-SR-B	SG-230x2-SR-G
	3	SG-230x3-SR-B	SG-230x3-SR-G
260	1.6	SG-260x1.6-SR-B	SG-260x1.6-SR-G
	2	SG-260x2-SR-B	SG-260x2-SR-G
	3	SG-260x3-SR-B	SG-260x3-SR-G

Tandem



Width	Thickness	Black Cold Rolled	Galvanised
200	1.6	TG-200x1.6-SR-B	TG-200x1.6-SR-G
	2	TG-200x2-SR-B	TG-200x2-SR-G
	3	TG-200x3-SR-B	TG-200x3-SR-G
216	1.6	TG-216x1.6-SR-B	TG-216x1.6-SR-G
	2	TG-216x2-SR-B	TG-216x2-SR-G
	3	TG-216x3-SR-B	TG-216x3-SR-G
230	1.6	TG-230x1.6-SR-B	TG-230x1.6-SR-G
	2	TG-230x2-SR-B	TG-230x2-SR-G
	3	TG-230x3-SR-B	TG-230x3-SR-G
260	1.6	TG-260x1.6-SR-B	TG-260x1.6-SR-G
	2	TG-260x2-SR-B	TG-260x2-SR-G
	3	TG-260x3-SR-B	TG-260x3-SR-G

Spring Plates



HSP-100-100-8

Axle to spring connection plate 100x100x8mm (hole centres 65x63mm), Galvanised

HSP-90-90-6

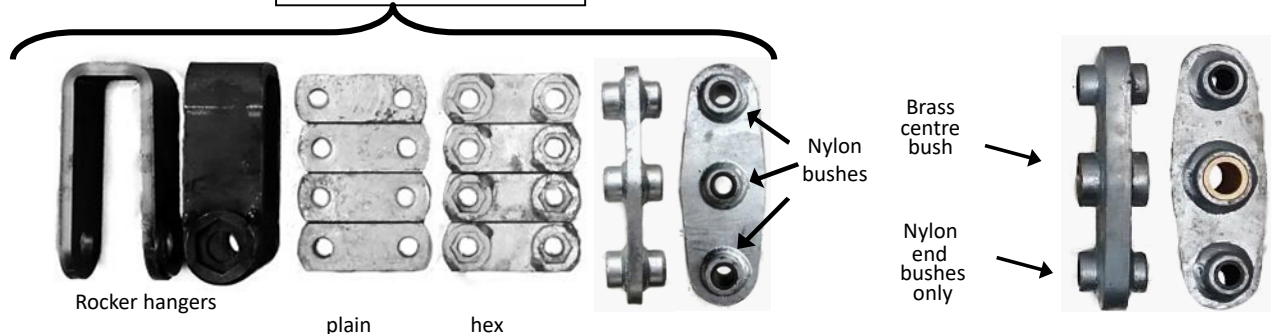
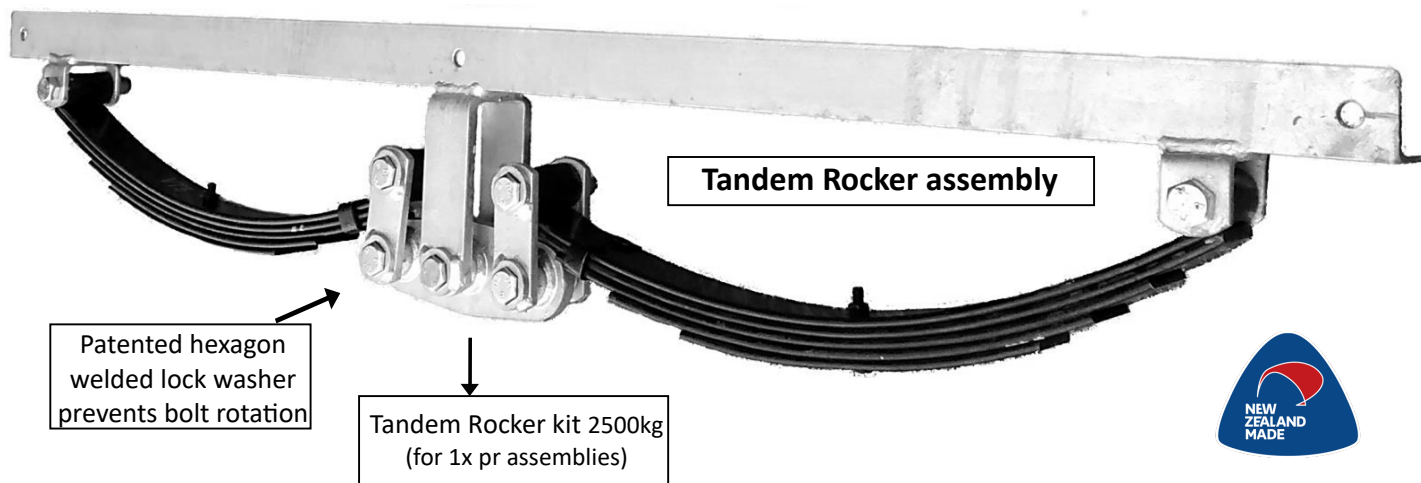
Axle to spring connection plate 90x90x6mm (hole centres 64x64mm), Galvanised



UBS-53-130

U-bolt square, M12x53x130mm For spring plates, Galvanised

Tandem Rocker



Tandem Rocker Kits



TRA-2.5-1314

2500kg Tandem rocker assembly for 13" & 14" wheels
Galvanised with black springs

TRA-2.5-1516

2500kg Tandem rocker assembly for 15" & 16" wheels
Galvanised with black springs

TRK-2.5

2500kg Tandem rocker kit for 1 pr assemblies
Black hangers all other parts Galvanised
No bolts supplied

TRK-3.5

3500kg Tandem rocker kit for 1 pr assemblies
Black hangers all other parts Galvanised
No bolts supplied



Tandem Rocker Parts



TR-2.5

2500kg tandem rockers

Galvanised

TR-3.5

3500kg tandem rockers

Galvanised

TRH-2.5

2500kg tandem rocker hangers, Black

TRH-3.5

3500kg tandem rocker hangers, Black



LP-2.5-P

Plain link plate for 2500kg tandem rocker, Galvanised

LP-3.5-P

Plain link plate for 3500kg tandem rocker, Galvanised



LP-2.5-H

Hex link plate for 2500kg tandem rocker, Galvanised

LP-3.5-H

Hex link plate for 3500kg tandem rocker, Galvanised



HW-16

Hex washer to suit M16 head, black

HW-20

Hex washer to suit M20 head, black

HW-24

Hex washer to suit M24 head, black



BOLT-16x90

M16 x 90mm shackle bolt & nyloc nut
Zinc plated

BOLT-16x100

M16 x 100mm shackle bolt & nyloc nut
Zinc plated

BOLT-24x100

M24 x 100mm shackle bolt & nyloc nut
Zinc plated



TRCB-2.5

2500kg Tandem rocker centre bush, nylon



TRCB-3.5

3500kg Tandem rocker centre bush, brass

Spring Hanger & Slipper



SH-41-13

Spring Hanger 41x13x6 Black

SH-43-17

Spring Hanger 43x17x6 Black

SH-47-13

Spring Hanger 47x13x6 Black

SH-48-17

Spring Hanger 48x17x6 Black

SH-52-17

Spring Hanger 52x17x6 Black

SL-48-25

Spring slipper 48x25x5 Black

SL-48-35

Spring slipper 48x35x5 Black

SL-52-25

Spring slipper 52x25x5 Black

SL-52-35

Spring slipper 52x35x5 Black



Chassis Brackets



CHB-35-65-2

35mmx65mmx6mm, 2x14mmØ Black

CHB-50-50-2

50mmx50mmx6mm, 2x14mmØ Black

CHB-35-65-4

35mmx65mmx6mm, 4x12mmØ Black

CHB-40-75-4

40mmx75mmx6mm, 4x12mmØ Black

CHB-50-50-4

50mmx50mmx6mm, 4x12mmØ Black

CHB-50-75-4

50mmx75mmx6mm, 4x12mmØ Black

CHB-65-35-4

65mmx35mmx6mm, 4x12mmØ Black

CHB-75-40-4

75mmx40mmx6mm, 4x12mmØ Black

CHB-75-50-4

75mmx50mmx6mm, 4x12mmØ Black

CHB-75-100-4

75mmx100mmx6mm, 4x12mmØ Black

CHB-100-50-4

100mmx50mmx6mm, 4x12mmØ Black

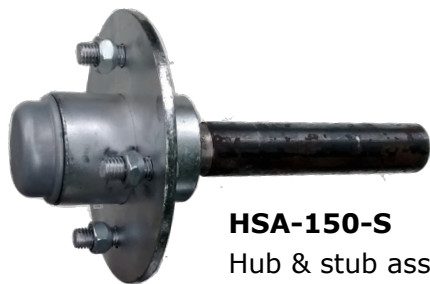
CHB-130-50-4

130mmx50mmx6mm, 4x12mmØ Black



Hubs & Stubs

for agricultural trailers only (rated approx. 750kg/pr)



HSA-150-S

Hub & stub assembly,
150mmØ studded 4x4
Includes dust cover & hub nuts



HSA-150-B

Hub & stub assembly,
150mmØ blank including dust cover

HSA-180-B

Hub & stub assembly,
180mmØ blank including dust cover



HS-250-A

250mm Stub axle including nut & washer, Black



HS-150-B

150mm hub, blank with bearings fitted
Zinc plated

HS-180-B

180mm hub, blank with bearings fitted
Zinc plated



HS-150-S

150mmØ hub, studded 4x4
bearings fitted, Zinc plated



HS-6505-RS

Hub bearing



HS-NB

Hub bolt and nut
Zinc plated



HS-52-DC

Hub dust cover

Tailgate Latches



TG-140-HMB

Tailgate latch handle 140mm, Zinc Plated x2
Weld on mounts, Black x2
Bolts, spring washers & nyloc nuts x2



TG-140-HM

Tailgate latch handle 140mm
Zinc Plated x2
Weld on mounts, Black x2



TG-140-H

Tailgate latch handle 140mm x2
Zinc Plated

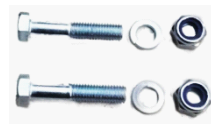


TG-M

Tailgate latch weld on mounts x2
Black

TG-B

Bolt, spring washer & nyloc nut x2



Load Hooks



TD-12

Tie down hook 12mmØ, Black

TD-20

Tie down hook 20mmØ, Black

RH-12

Rope hook 12mmØ, Black

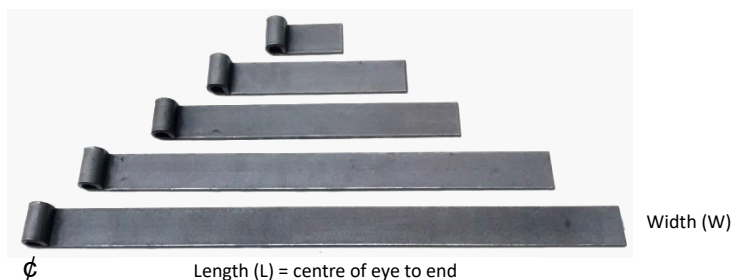
RH-16

Rope hook 16mmØ, Black



Hinge Straps

Supplied weld on and in black/raw steel



12mmØ eye	Length
HM-12-75	75mm
HM-12-130	130mm
HM-12-150	150mm
HM-12-200	200mm
HM-12-250	250mm
HM-12-300	300mm
HM-12-350	350mm
HM-12-450	450mm
HM-12-500	500mm

16mmØ eye	Length
HM-16-75	75mm
HM-16-100	100mm
HM-16-300	300mm
HM-16-450	450mm
HM-16-500	500mm

We custom manufacture to suit your requirements. Supplied weld on and in black/raw steel

Hinge Gudgeons



GM-12-SWB

12mmØ, short weld on, Black

GM-12-LWB

12mmØ, long weld on, Black

GM-16-WB

16mmØ, weld on, Black

GM-20-WB

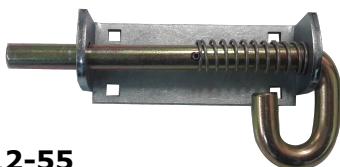
20mmØ, weld on, Black

GM-12-BZP

12mmØ, bolt on, Zinc Plated



Spring Bolts



SB-12-55

Bolt on 12mmØ x 55mm, Zinc Plated

SB-12-100

Bolt on 12mmØ x 100mm, Zinc Plated

SB-12-150

Bolt on 12mmØ x 150mm, Zinc Plated



SB-16-W

Weld on 16mmØ lever handle, Zinc Plated

SB-20-W

Weld on 20mmØ lever handle, Zinc Plated

SB-24-W

Weld on 24mmØ lever handle, Zinc Plated



SB-16-B

Bolt on 16mmØ lever handle, Zinc Plated

SB-20-B

Bolt on 20mmØ lever handle, Zinc Plated

SB-24-B

Bolt on 24mmØ lever handle, Zinc Plated



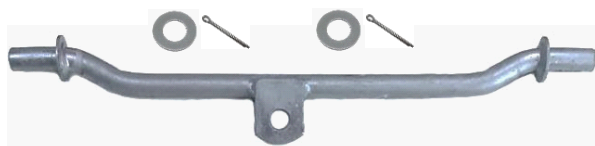
SB-20-R

Weld on 20mmØ rope latch, Zinc Plated

SB-20-RB

Bolt on 20mmØ rope latch, Zinc Plated

Wobble Arms



WA-610

600mm x 24mmØ, Galvanised
2 x Washers & 2 x Stainless steel split pins

WA-510

500mm x 24mmØ, Galvanised
2 x Washers & 2 x Stainless steel split pins

WA-410

400mm x 24mmØ, Galvanised
2 x Washers & 2 x Stainless steel split pins

WA-310

300mm x 24mmØ, Galvanised
2 x Washers & 2 x Stainless steel split pins

WA-310-20

300mm x 20mmØ, Galvanised
2 x Washers & 2 x Stainless steel split pins



WA-3-20

For RB8, 20mmØ, Galvanised
2 x Washers & 2 x Stainless steel split pins

WA-3-24

For RB8, 24mmØ, Galvanised
2 x Washers & 2 x Stainless steel split pins

Cross Arms



CRA-416

416mm including 2 x nyloc nuts, Galvanised

CRA-316

316mm including 2 x nyloc nuts, Galvanised

Mounts & Plates



SM-48-300

300mm Quad support mount
Galvanised

SM-10-300

300mm Dual support mount
Galvanised

SM-STU-24

Single tower upright support
24mmØ, Galvanised

MP-90-80-6

90mm x 80mm x 6mm
Galvanised

MP-110-80-6

110mm x 80mm x 6mm
Galvanised

MP-120-80-6

120mm x 80mm x 6mm
Galvanised

MP-145-80-6

145mm x 80mm x 6mm
Galvanised



Quad Arms



QA-600

600mm including 2 x nyloc nuts, Galvanised

QA-500

500mm including 2 x nyloc nuts, Galvanised

QA-400

400mm including 2 x nyloc nuts, Galvanised

QA-300

300mm including 2 x nyloc nuts, Galvanised

Parts



UB-G

For attaching support post
M10 x 53mm x 120mm
Galvanised



W24-G

M24 washer, Galvanised

W20-G

M20 washer, Galvanised



SP-L

Split pin, 4mm x 40mm
Stainless Steel

RW

Roller Wheels

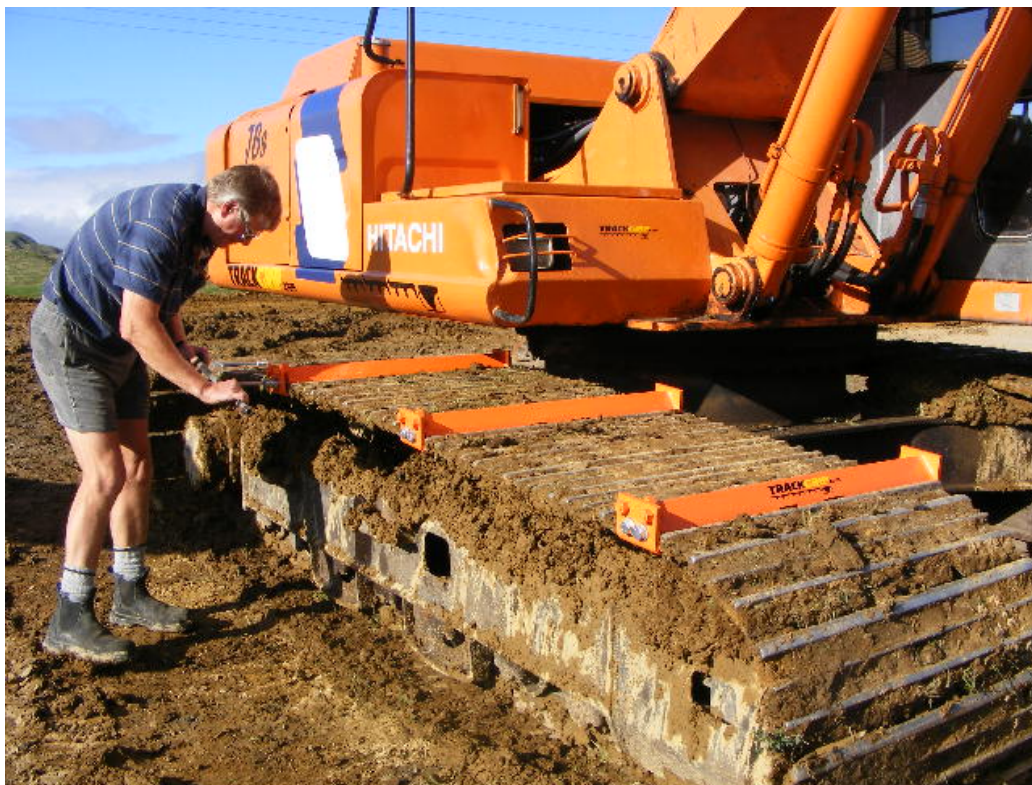
Standard Grip



Standard Grip

The Standard Grip multifit is available in light and medium heavy design. Exceptional sideways protection keeps you productive and working safely. Perfect for general work, including grass and farmland.

SG-300-L	Standard Grip 300mm Light	10 Ton
SG-400-L	Standard Grip 400mm Light	10 Ton
SG-450-L	Standard Grip 450mm Light	10 Ton
SG-500-MH	Standard Grip 500mm Med Heavy	20 Ton
SG-600-MH	Standard Grip 600mm Med Heavy	20 Ton
SG-700-MH	Standard Grip 700mm Med Heavy	20 Ton
SG-800-MH	Standard Grip 800mm Med Heavy	20 Ton
SG-900-MH	Standard Grip 900mm Med Heavy	20 Ton



Mighty Grip Forestry



Mighty Grip Forestry

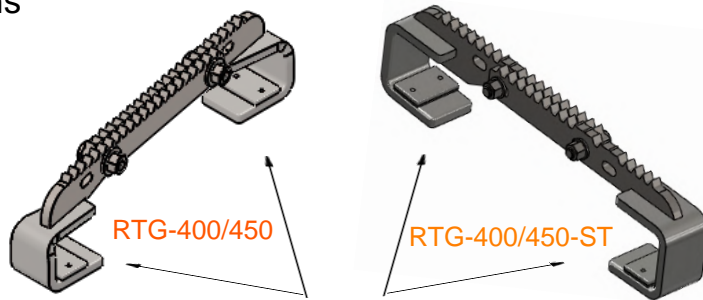
The Mighty Grip multifit is available in a heavier duty model for the most challenging terrain. Available in light, medium heavy and heavy duty designs for exceptional sideways protection. The extra lugs make this product perfect for slippery or hard surfaces such as papa and sandstone.

MGF-300-L	Mighty Grip 300mm Light	10 Ton
MGF-350-L	Mighty Grip 350mm Light	10 Ton
MGF-400-L	Mighty Grip 400mm Light	10 Ton
MGF-450-L	Mighty Grip 450mm Light	10 Ton
MGF-500-MH	Mighty Grip 500mm Med Heavy	20 Ton
MGF-600-MH	Mighty Grip 600mm Med Heavy	20 Ton
MGF-700-MH	Mighty Grip 700mm Med Heavy	20 Ton
MGF-800-MH	Mighty Grip 800mm Med Heavy	20 Ton
MGF-900-MH	Mighty Grip 900mm Med Heavy	20 Ton
MGF-600-HD	Mighty Grip 600mm Heavy Duty	30 Ton +
MGF-700-HD	Mighty Grip 700mm Heavy Duty	30 Ton +
MGF-800-HD	Mighty Grip 800mm Heavy Duty	30 Ton +
MGF-850-HD	Mighty Grip 850mm Heavy Duty	30 Ton +
MGF-900-HD	Mighty Grip 900mm Heavy Duty	30 Ton +



Rubber Grip

- >> Fits All Common Track Patterns
- >> Adjustable Size 400-450mm
- >> Quick and Easy Installation
- >> Increased Safety
- >> More Productivity
- >> Less Downtime
- >> Extra Traction
- >> Fuel Saving



Will fit most common offset and straight through track patterns, Adjustable track thickness 31-51mm, additional packers can be added as the track wears



400mm Configuration



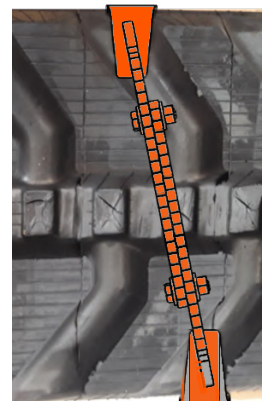
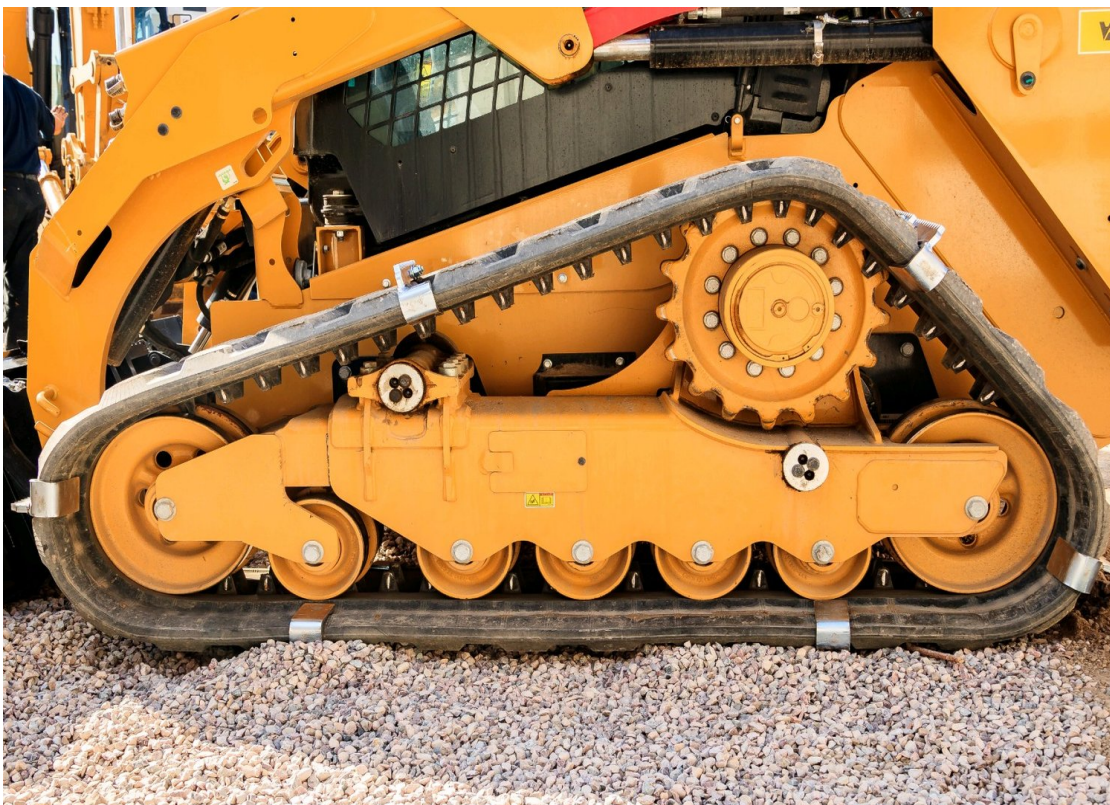
450mm Configuration



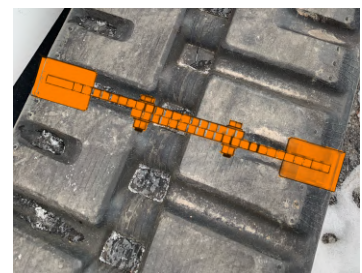
400mm Configuration



450mm Configuration



36mm
60mm



Ultimate Grip



Ultimate Grip

Ultimate Grip is our 'ultimate in strength TrackGrip'.

Produced in heavy and heavy duty to provide exceptional sideways protection.

The extra lugs make this TrackGrip model perfect for snow, ice and forestry in rocky terrains.

ITG-500-H	Ice Grippa TrackGrip 500mm Heavy	25 Ton
ITG-600-H	Ice Grippa TrackGrip 600mm Heavy	25 Ton
ITG-700-H	Ice Grippa TrackGrip 700mm Heavy	25 Ton
ITG-800-H	Ice Grippa TrackGrip 800mm Heavy	25 Ton
ITG-850-H	Ice Grippa TrackGrip 850mm Heavy	25 Ton
ITG-900-H	Ice Grippa TrackGrip 900mm Heavy	25 Ton
ITG-600-HD	Ice Grippa TrackGrip 600mm Heavy D	30 Ton +
ITG-700-HD	Ice Grippa TrackGrip 700mm Heavy D	30 Ton +
ITG-800-HD	Ice Grippa TrackGrip 800mm Heavy D	30 Ton +
ITG-850-HD	Ice Grippa TrackGrip 850mm Heavy D	30 Ton +



TRACKBACK

GETTING BACK ON TRACK

NZ Provisional Patents 611819

TrackBack 8 in 1



REFITTING TRACKS SAFELY

When fitting TrackBacks ensure chain between the TrackBacks is tight. If required can adjust chain by rotating half a turn or more.



REJOIN TRACK CHAINS

Fit a pair of track backs to each side of the join then fit a chain block to the bottom holes and pull together.



TRACK WINCH

To use as a winch, chains/cables can be fitted to the centre of the TrackBacks on one or both tracks. After anchoring the chains drive yourself forward.



POST ATTACHMENT

Secure chains around post to the bottom hole of each TrackBack with the post facing forward. Caution: Must remove post before doing a full revolution.



TEMPORARY TRACTION

Use a chain/cable between TrackBacks for temporary traction.



ULTIMATE TRACTION

Fit large chains or links between TrackBacks.



STEEL PIPE LIFTER

Use TrackBacks to lift steel pipes into place e.g. at a crossing. Caution: Safe work practices are recommended.



EMERGENCY ANCHOR

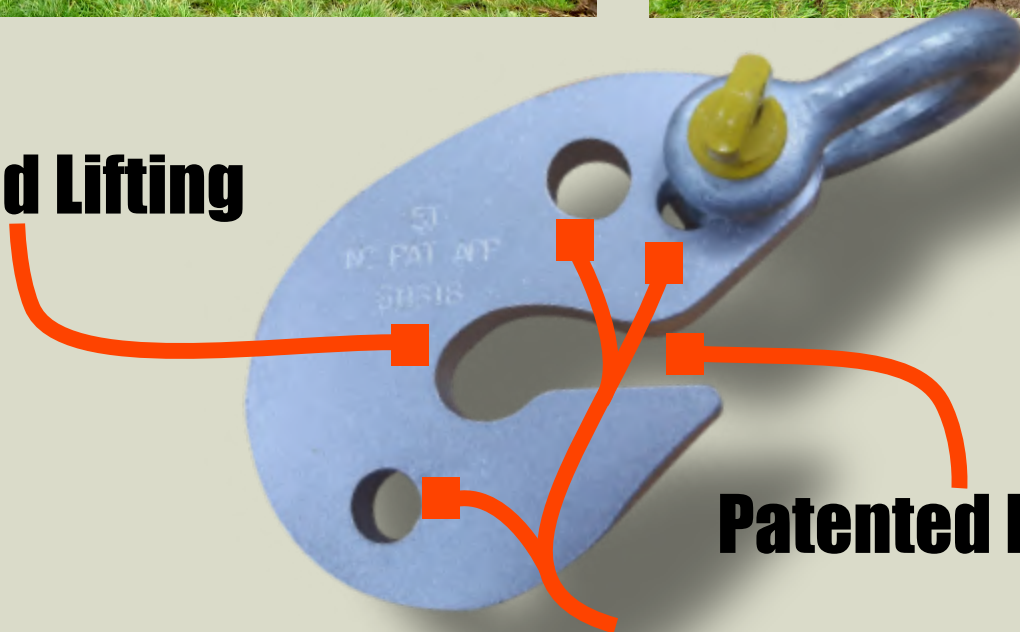
Fix chain/cable to the TrackBacks. Anchor one end of chain/cable to an anchor point then lift track and rotate track until tensioned.

TRACKBACK

GETTING BACK ON TRACK



Rated Lifting



Patented Locking Slot

Multiple Attachment Points

TBHS-10	TrackBack 10mm Hook & 13 ϕ Shackle Rated 1.7Ton	1-10 Ton
TBHS-12	TrackBack 12mm Hook & 16 ϕ Shackle Rated 3.4Ton	10-25 Ton
TBHS-20	TrackBack 20mm Hook & 19 ϕ Shackle Rated 4.25Ton	25-40 Ton
TBHS-25	TrackBack 25mm Hook & 22 ϕ Shackle Rated 4.5Ton	40 Ton +

Pipe Blanks

PB-24-3

24mmØ x 3mm suits 20NB pipe

PB-31-3

31mmØ x 3mm suits 25NB pipe

PB-38-3

38mmØ x 3mm suits 32NB pipe

PB-45-3

45mmØ x 3mm suits 40NB pipe

PB-54-3

54mmØ x 3mm suits 50NB pipe

PB-73-3

73mmØ x 3mm suits 65NB pipe

PB-83-3

83mmØ x 3mm suits 80NB pipe

PB-106-3

106mmØ x 3mm suits 100NB pipe



PB-132-3

132mmØ x 3mm suits 125NB pipe

PB-158-3

158mmØ x 3mm suits 150NB pipe

PB-106-5

106mmØ x 5mm suits 100NB pipe

PB-132-5

132mmØ x 5mm suits 125NB pipe

PB-158-5

158mmØ x 5mm suits 150NB pipe

3-5mm thick steel. Standard sizes listed below however we custom manufacture any size as required, including dome shaped.

Pipe Clamps



Simple, strong and secure. Multiple sizes available.

PC-2.5-25.4

2 piece 2.5mm x 25mm x 25.4mmØ x 3mm
Electropolished stainless steel

PC-3-50.8

2 piece 3mm x 25mm x 50.8mmØ x 3mm
Electropolished stainless steel

PC-3-76.2

2 piece 3mm x 25mm x 76.2mmØ x 3mm
Electropolished stainless steel

PC-3-101.6

2 piece 3mm x 25mm x 101.6mmØ x 3mm
Electropolished stainless steel

Pipe Saddles

PS3-32-1

32mm x 3mm 20mmØ x 3mm, Galvanised

PS3-32-2

32mm x 3mm 30mmØ x 3mm, Galvanised

PS3-32-3

32mm x 3mm 40mmØ x 3mm, Galvanised

PS3-32-4

32mm x 3mm 55mmØ x 3mm, Galvanised

PS3-32-5

32mm x 3mm 90mmØ x 3mm, Galvanised



Wire Rope Thimble

TH-16-G

16mmØ Galvanised



Stirrers



STIR-DRUM

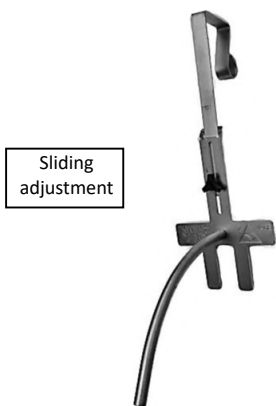
Drum stirrer 10mmØ shaft x 900mm long, galvanised. Insert in your electric drill and stir that drum or barrel with ease. The chain links are loose to enable inserting in drums and barrels via the screw caps

STIR-COL

Colostrum stirrer,



Trough Boss



Sliding
adjustment



TBOSS

Trough boss ballcock protector is fully adjustable & Zinc Plated

Fits over the wall of a concrete water trough to protect the ballcock arm from breakage by cattle. Adjustable to fit most concrete troughs. Bottom slot fits over ballcock fitting. Protruding rod protects the fitting from cattle stepping on them. Easily fitted and removable within seconds, shift it to the next paddock with your cattle. Protect your trough and save water.

Strop Winder

SWA

50mm handheld strop winder, Zinc Plated
Wind load binders up to 50mm wide just insert the strop into the open ended slotted axle and wind the handle. Remove the handle to disengage easily from the tiedown when it has been wound up.
Easy efficient and a must for every toolbox

